



**THAIPHAT**

— ENTERPRISE —

# CONTENT

About Us	02
Our Mission	03
Core Value	04
Our Service	05
Organization Chart	06

## PROJECT PORTFOLIO

Furniture design and manufacturing project	08
Interior design and decoration projects	09
Auditorium Renovation Project	10
Building construction and decoration project	11
New office building construction project	12
The Majestic Hotel Hua Hin construction project	13
VIP passenger elevator design and installation project	14
Construction project to expand the shrine building	15
Office interior design project.	16
Luxury Restaurant interior design project	17
Luxury residential construction Sukhumvit, Bangkok	18
Certificate of Performance	19

# ABOUT US



**MR. PHATPONG PONGPAPHAT**  
Managing Director

**NAME OF FIRM**  
**THAIPHAT ENTERPRISE CO.,LTD.**

**DATE OF COMPANY**  
**3rd January 1997**

**REGISTRATION AUTHORISED**  
**CAPITAL**  
**฿15,000,000**

**PAID UP CAPITAL**  
**฿15,000,000**

*Over the past twenty-seven years, We had developed into one of Thailand's most cutting-edge and forward-thinking construction firms.*

# OUR MISSION

The design of the company's visual communication, focusing on reinforcing the main identity of the company's principle. *"Legitimacy, Growth and Sustainability"*

We strive to provide quality construction services to our clients while maintaining the highest ethical standards, expanding our business through strategic growth, and implementing sustainable practices that preserve our planet's resources for future generations.

**"WE ARE A CONSTRUCTION COMPANY  
COMMITTED TO DELIVERING EXCELLENCE  
IN ALL ASPECTS OF OUR WORK"**



# CORE VALUE



"Strict adherence to rules and regulations, along with building trust with business partners through ethical business practices."



Legitimacy & Corporate Governance  
**Legitimacy**

"Expanding the business base through project development and acquiring new customers, coupled with improving operational efficiency and financial performance."



Sustainable Growth  
**Growth**



"Operating with environmental considerations and efficient resource utilization to achieve long-term business goals while maintaining social responsibility."



Sustainability & CSR  
**Sustainability**



# OUR SERVICE



### **Design and Planning**

Architectural, engineering, and interior design services, including project planning and budget estimation.



### **Construction Management**

Overseeing the construction process includes planning, budget management, coordinating with subcontractors, and managing materials and equipment



### **General & Specialty Contracting**

Comprehensive construction project management from design and planning to the installation of specialized systems, such as electrical systems.



### **Renovation and Remodeling**

Renovation, repair, and modification of existing structures to comply with current standards and accommodate changing functional requirements.



### **Pre-Construction & Post-Construction Services**

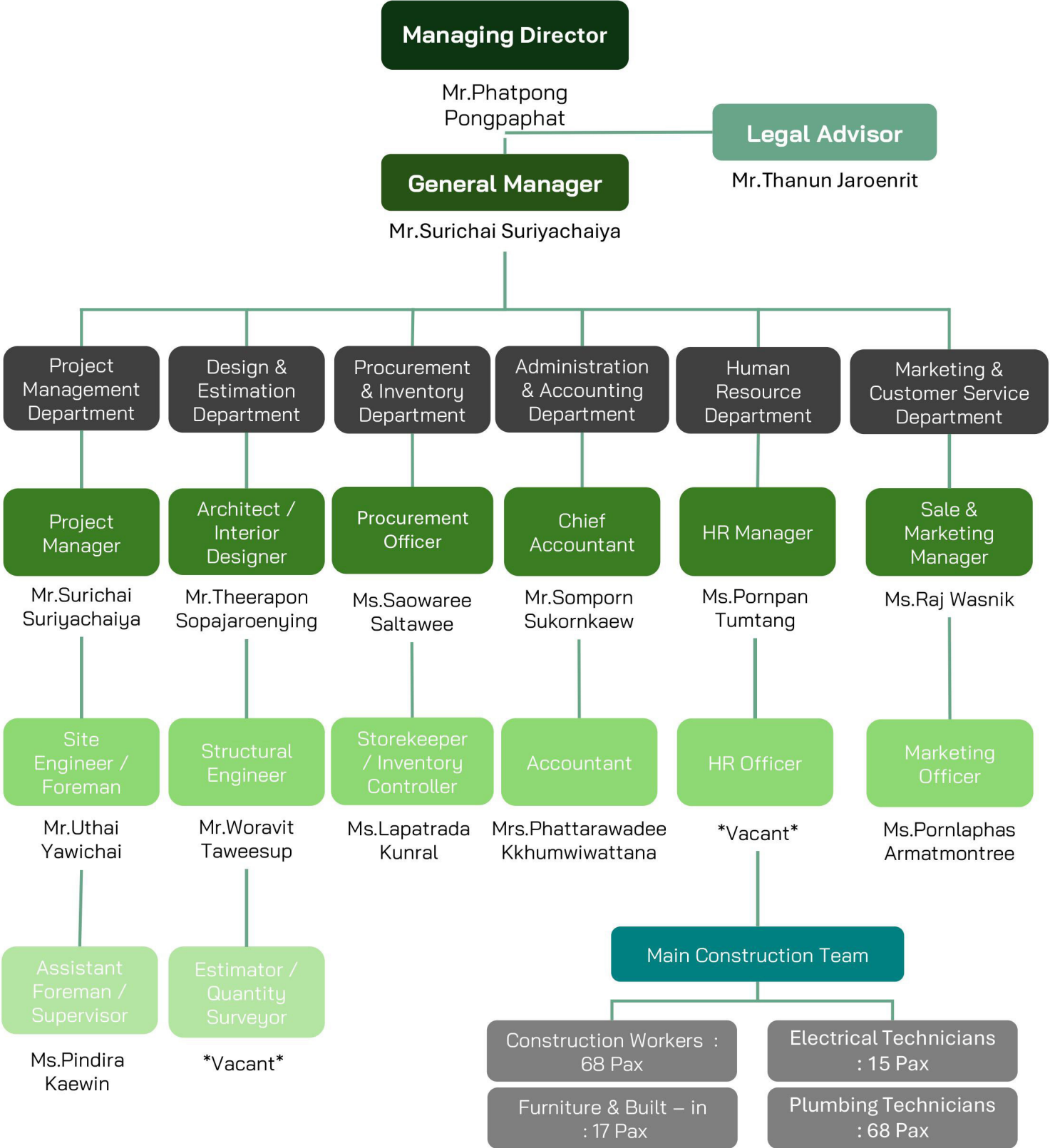
Consulting and planning before project commencement, with warranty and maintenance after delivery.



### **Sustainable Building**

Environmentally responsible practices integrated throughout all stages of the construction process.

# ORGANIZATION CHART





PROJECT

# PORTFOLIO



THAI PHA ENTERPRISE

# DESIGN AND PRODUCTION FURNITURE FOR CHANNEL 3 NEWS



Design and fabrication of a futuristic news anchor desk that integrates architectural design with broadcast technology.

The counter features a seamless curved structure with integrated LED lighting to enhance visual depth and on-air presence. The design also prioritizes ergonomic comfort for presenters, along with well-organized and secure management of complex internal wiring systems.



## NATIONAL CREDIT BUREAU (NCB)

Corporate office interior design project encompassing the overall workplace environment, including a large seminar and conference hall. The design emphasizes a contemporary and international aesthetic, while fostering a functional workspace that supports productivity and collaboration. Natural wood tones are thoughtfully combined with modern materials to create a balanced environment that reflects the organization's stability, credibility, and professional image.



# AUDITORIUM & CONFERENCE ROOM RENOVATION (AOT)



Renovation and interior enhancement of the main **Auditorium** and executive seminar rooms, designed to elevate the facilities to a modern, international standard. The project features high-performance acoustic wall panels, tiered seating for optimal visibility, and a carefully designed lighting scheme that enhances the auditorium's formal and refined atmosphere.

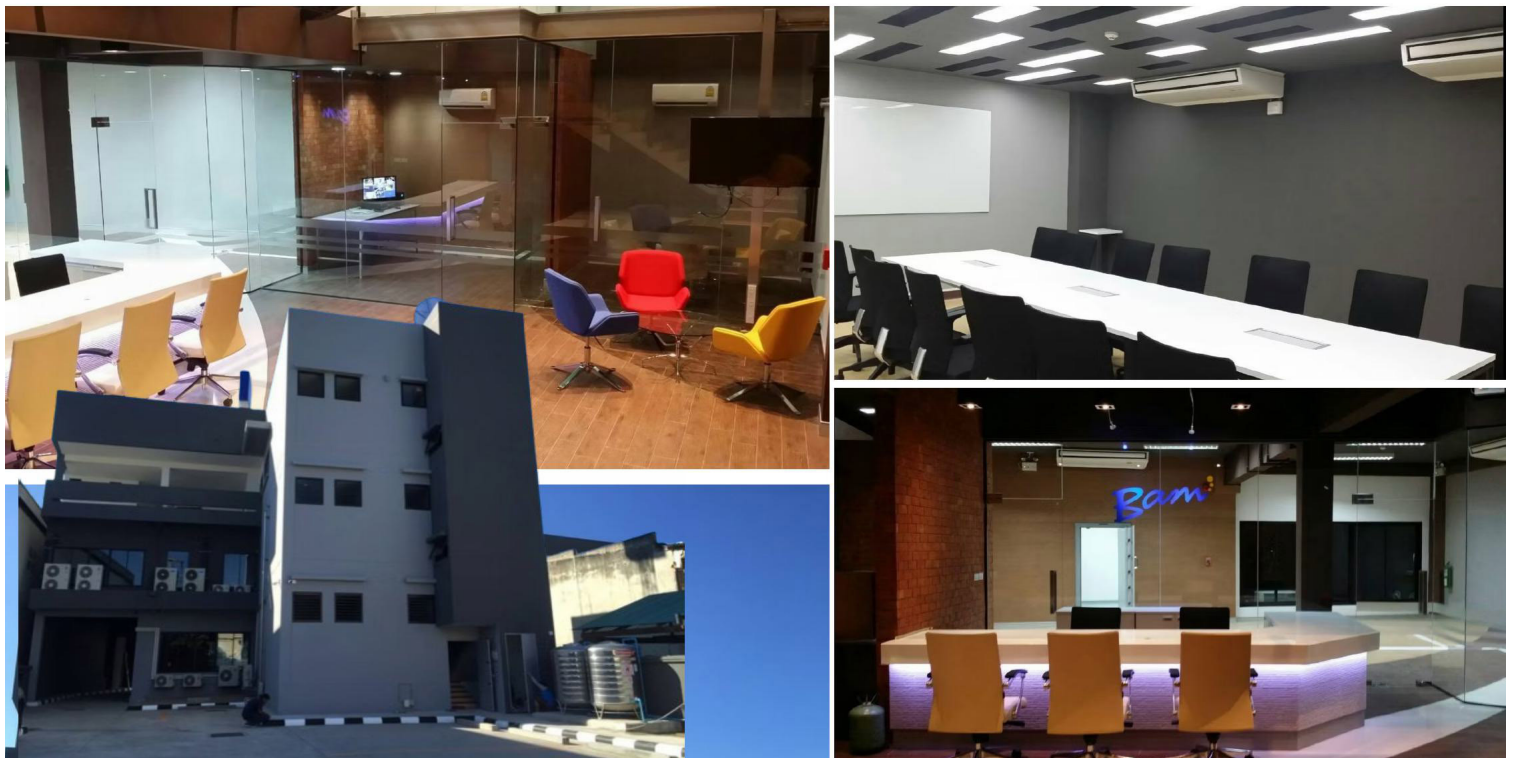
Durable yet elegant materials were selected to reflect the prestigious image of a leading organization connecting Thailand to the global stage.



# OFFICE RENOVATION & INTERIOR DESIGN - CHIANG MAI (BAM)

Building construction and interior fit-out project delivered as a comprehensive service, covering structural groundwork through to architectural interior works. The scope includes core engineering systems, the planning of modern office spaces, and the design and installation of customer service counters that project a professional corporate image.

The project emphasizes the use of high-durability materials and meticulous installation, ensuring compliance with safety standards while reinforcing the reliability and credibility expected of a leading financial institution.



# NEW HEAD OFFICE MEDIA EXPERTISE INTERNATIONAL (THAILAND)

Construction of a new office building delivered as a turnkey project to support the company's business expansion. The scope covers the entire process, from foundation works and structural construction to architectural development and the efficient planning of interior spaces.

The project prioritizes structural strength and durability in accordance with international engineering standards, while incorporating modern, energy-efficient materials to create a sustainable and productive working environment for the long term.



# MAJESTIC HOTEL - HUA HIN



Project management and construction of a premium resort hotel, covering the full scope from structural works through to final project completion and handover. The project includes the construction of multiple accommodation buildings, a large free-form swimming pool system, and surrounding landscape development designed to complement the resort's relaxing atmosphere.

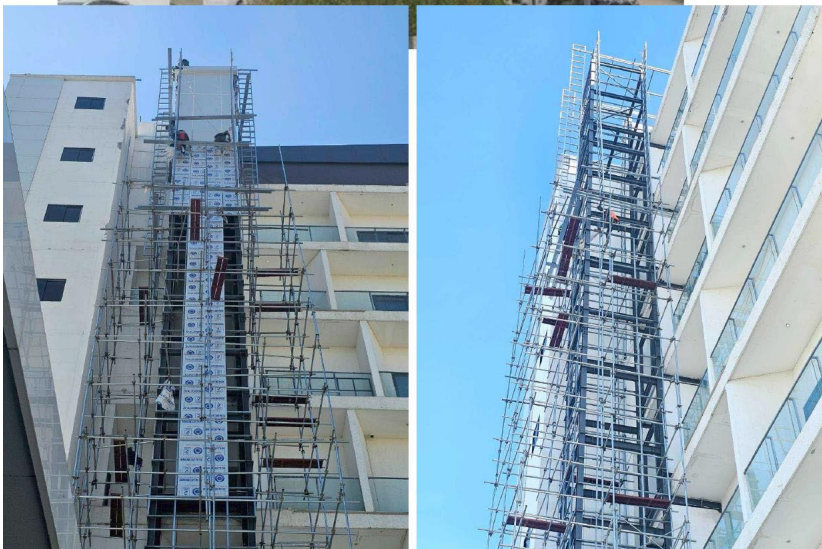


The project was executed under site constraints while maintaining strong and durable structural standards suited to the local climate. Modern and refined materials were carefully selected to create a luxurious environment in line with international hospitality standards.



# VIP PASSENGER LIFT INSTALLATION

Design and construction of the elevator shaft structure, along with the installation and interior finishing of a VIP passenger elevator.



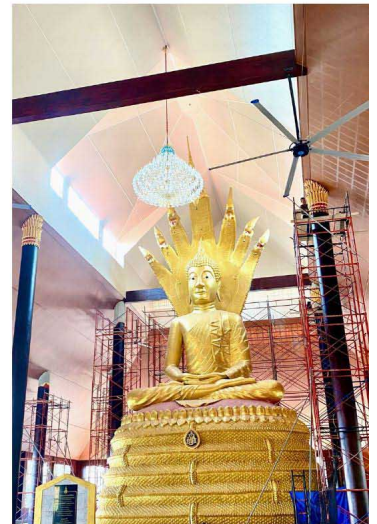
The project includes the installation of a high-precision external steel shaft designed to accommodate a glass or passenger elevator within a limited space.

The elevator cabin is finished with **gold mirror stainless steel**, complemented by contemporary graphic patterns and natural marble flooring, creating a luxurious and distinctive atmosphere.

# RENOVATION (PANG NAK PROK) WAT KHAO SALA, SURIN

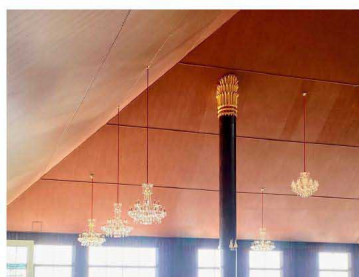


The engineering, construction, and expansion work for the building housing the large Buddha statue in the posture emphasizes the integration of modern steel structures with elegant religious artistry.



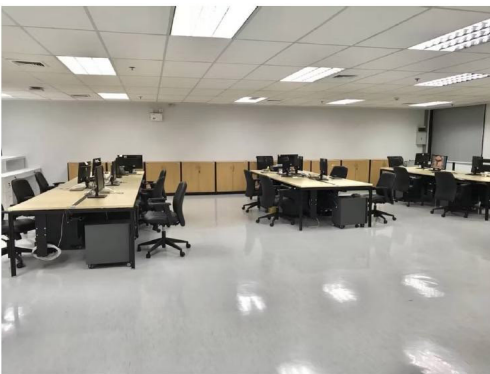
Full responsibility for piling and foundation works to ensure long-term structural integrity for the massive statue.

The project was executed under a strict **strategic timeline**, ensuring every phase—from structural assembly to final finishing—met the highest standards of craftsmanship. The result is a refined and dignified sanctuary dedicated to the Buddhist community.



# OFFICE INTERIOR DESIGN EVERGREEN (THAILAND)

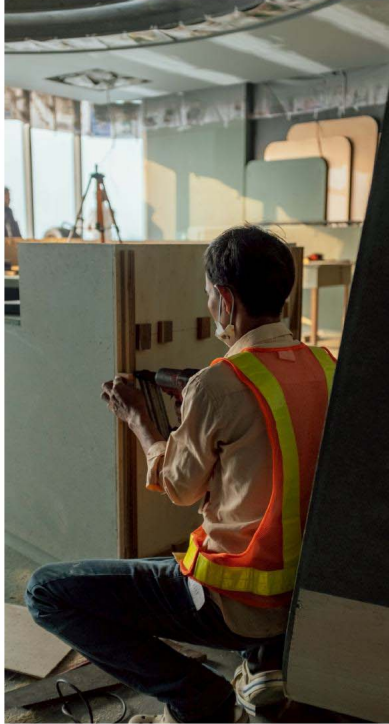
This project involved a comprehensive **Full Office Fit-out**, meticulously designed to transform the workspace into a modern, organized environment that meets international corporate standards.



The design centers on Spatial Efficiency, creating a seamless flow throughout the office. A minimalist palette of crisp white tones paired with natural wood finishes was selected to evoke a sense of openness and tranquility. To ensure a productive atmosphere, a customized lighting system was integrated to provide optimal illumination for professional tasks.



# LUXURY RESTAURANT INTERIOR FIT-OUT



This project showcases a sophisticated interior design and fit-out for a luxury restaurant, bar, and hotel recreational spaces. The design focuses on creating a distinctive, high-end atmosphere that redefines the guest experience through meticulous attention to detail. We integrated advanced Ambient Lighting systems with custom-designed ceiling features to add depth and character. The interplay of light and shadow, combined with high-gloss surface finishes, creates a multi-dimensional and opulent environment.

# LUXURY RESIDENTIAL CONSTRUCTION SUKHUMVIT, BANGKOK



A comprehensive **Full-scale Residential Construction** of a premium private residence located in the prestigious Sukhumvit area. This project exemplifies our expertise in managing complex urban construction, delivering a seamless transition from structural foundation to high-end architectural finishing. Overseeing the entire lifecycle of the building process, ensuring structural integrity and adherence to the highest safety and quality standards.





**Thaiphat Enterprise Co., Ltd.**

Rama II Rd., Soi 69 Yeak 2, Samaedam, Bangkhuntien,  
Bangkok

Tel : +66 2 892 9911

Email : [Thaiphat1997@yahoo.com](mailto:Thaiphat1997@yahoo.com)

<https://www.thaiphat-enterprise.com>





**THAIPHAT**

— ENTERPRISE —

# CONTENT

About Us	02
Our Mission	03
Core Value	04
Our Service	05
Organization Chart	06
<b>PROJECT PORTFOLIO</b>	
Furniture design and manufacturing project	08
Interior design and decoration projects	09
Auditorium Renovation Project	10
Building construction and decoration project	11
New office building construction project	12
The Majestic Hotel Hua Hin construction project	13
VIP passenger elevator design and installation project	14
Construction project to expand the shrine building	15
Office interior design project.	16
Luxury Restaurant interior design project	17
Luxury residential construction Sukhumvit, Bangkok	18
Certificate of Performance	19

# ABOUT US



**MR. PHATPONG PONGPAPHAT**  
Managing Director

**NAME OF FIRM**  
THAIPHAT ENTERPRISE CO.,LTD.

**DATE OF COMPANY**  
3rd January 1997

**REGISTRATION AUTHORISED  
CAPITAL**  
฿15,000,000

**PAID UP CAPITAL**  
฿15,000,000

*Over the past twenty-seven years, We had developed into one of Thailand's most cutting-edge and forward-thinking construction firms.*

# OUR MISSION

The design of the company's visual communication, focusing on reinforcing the main identity of the company's principle. *"Legitimacy, Growth and Sustainability"*

We strive to provide quality construction services to our clients while maintaining the highest ethical standards, expanding our business through strategic growth, and implementing sustainable practices that preserve our planet's resources for future generations.

**"WE ARE A CONSTRUCTION COMPANY  
COMMITTED TO DELIVERING EXCELLENCE  
IN ALL ASPECTS OF OUR WORK"**



# CORE VALUE



"Strict adherence to rules and regulations, along with building trust with business partners through ethical business practices."



Legitimacy & Corporate Governance  
**Legitimacy**

"Expanding the business base through project development and acquiring new customers, coupled with improving operational efficiency and financial performance."



Sustainable Growth  
**Growth**



"Operating with environmental considerations and efficient resource utilization to achieve long-term business goals while maintaining social responsibility."



Sustainability & CSR  
**Sustainability**



# OUR SERVICE



## Design and Planning

Architectural, engineering, and interior design services, including project planning and budget estimation.



## Construction Management

Overseeing the construction process includes planning, budget management, coordinating with subcontractors, and managing materials and equipment



## General & Specialty Contracting

Comprehensive construction project management from design and planning to the installation of specialized systems, such as electrical systems.



## Renovation and Remodeling

Renovation, repair, and modification of existing structures to comply with current standards and accommodate changing functional requirements.



## Pre-Construction & Post-Construction Services

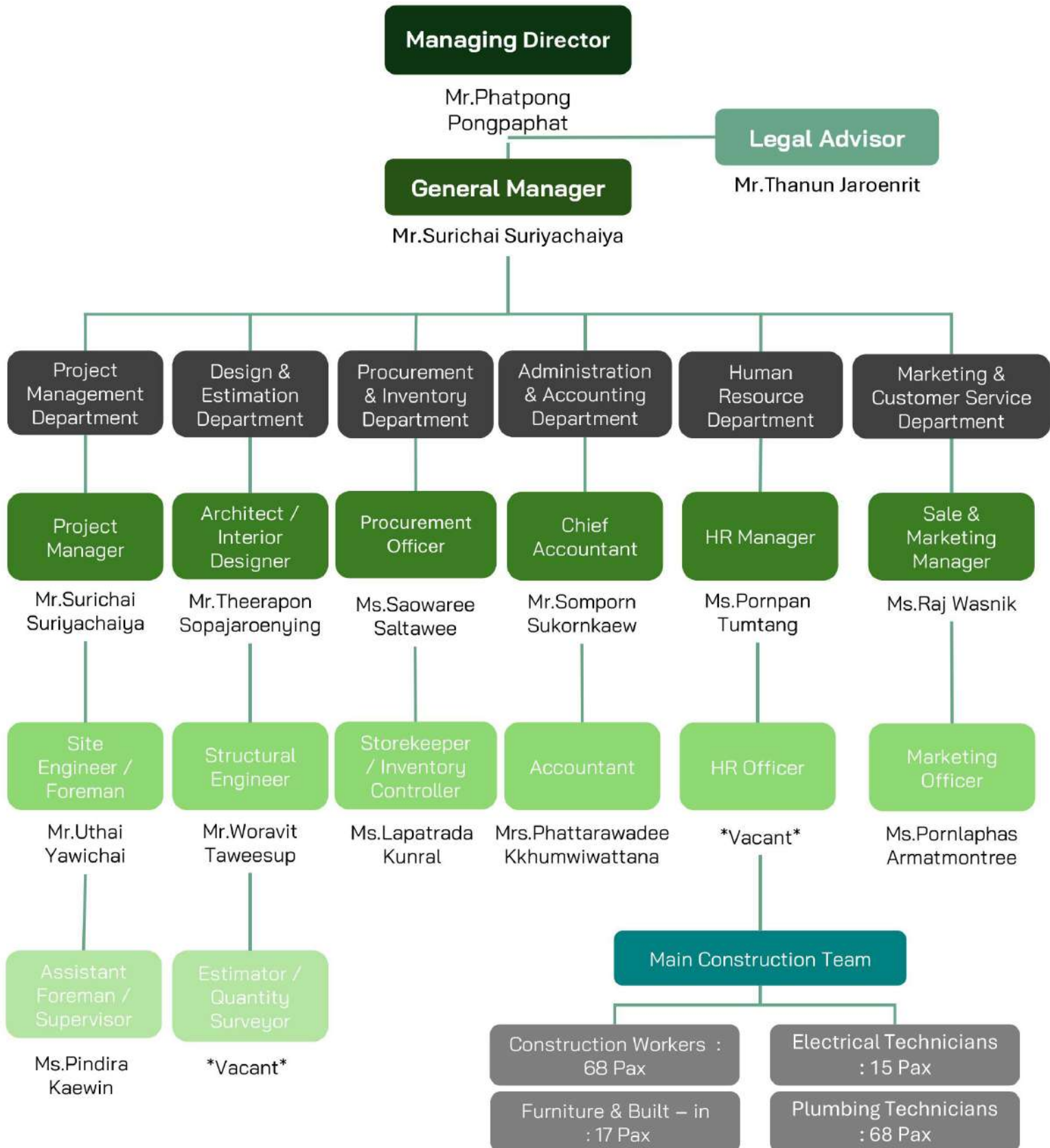
Consulting and planning before project commencement, with warranty and maintenance after delivery.



## Sustainable Building

Environmentally responsible practices integrated throughout all stages of the construction process.

# ORGANIZATION CHART





PROJECT

PORTFOLIO



THAIPHA  
ENTERPRISE

# DESIGN AND PRODUCTION FURNITURE FOR CHANNEL 3 NEWS



Design and fabrication of a futuristic news anchor desk that integrates architectural design with broadcast technology.

The counter features a seamless curved structure with integrated LED lighting to enhance visual depth and on-air presence. The design also prioritizes ergonomic comfort for presenters, along with well-organized and secure management of complex internal wiring systems.



## NATIONAL CREDIT BUREAU (NCB)

Corporate office interior design project encompassing the overall workplace environment, including a large seminar and conference hall. The design emphasizes a contemporary and international aesthetic, while fostering a functional workspace that supports productivity and collaboration. Natural wood tones are thoughtfully combined with modern materials to create a balanced environment that reflects the organization's stability, credibility, and professional image.



# AUDITORIUM & CONFERENCE ROOM RENOVATION (AOT)



Renovation and interior enhancement of the main **Auditorium** and executive seminar rooms, designed to elevate the facilities to a modern, international standard. The project features high-performance acoustic wall panels, tiered seating for optimal visibility, and a carefully designed lighting scheme that enhances the auditorium's formal and refined atmosphere.

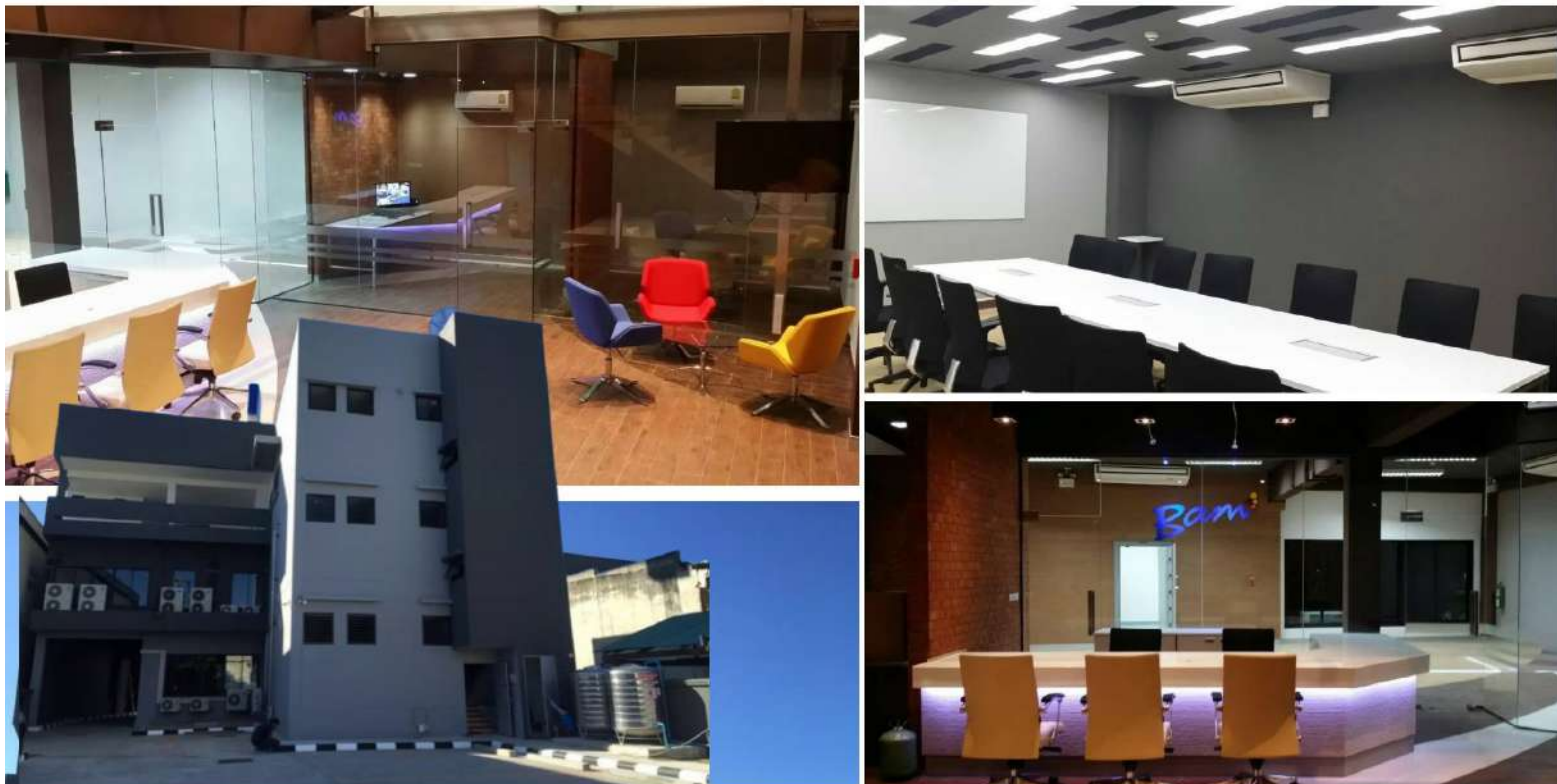
Durable yet elegant materials were selected to reflect the prestigious image of a leading organization connecting Thailand to the global stage.



# OFFICE RENOVATION & INTERIOR DESIGN - CHIANG MAI (BAM)

Building construction and interior fit-out project delivered as a comprehensive service, covering structural groundwork through to architectural interior works. The scope includes core engineering systems, the planning of modern office spaces, and the design and installation of customer service counters that project a professional corporate image.

The project emphasizes the use of high-durability materials and meticulous installation, ensuring compliance with safety standards while reinforcing the reliability and credibility expected of a leading financial institution.



# NEW HEAD OFFICE MEDIA EXPERTISE INTERNATIONAL (THAILAND)

Construction of a new office building delivered as a turnkey project to support the company's business expansion. The scope covers the entire process, from foundation works and structural construction to architectural development and the efficient planning of interior spaces.

The project prioritizes structural strength and durability in accordance with international engineering standards, while incorporating modern, energy-efficient materials to create a sustainable and productive working environment for the long term.



# MAJESTIC HOTEL - HUA HIN

Project management and construction of a premium resort hotel, covering the full scope from structural works through to final project completion and handover. The project includes the construction of multiple accommodation buildings, a large free-form swimming pool system, and surrounding landscape development designed to complement the resort's relaxing atmosphere.

The project was executed under site constraints while maintaining strong and durable structural standards suited to the local climate. Modern and refined materials were carefully selected to create a luxurious environment in line with international hospitality standards.



# VIP PASSENGER LIFT INSTALLATION

Design and construction of the elevator shaft structure, along with the installation and interior finishing of a VIP passenger elevator.



The project includes the installation of a high-precision external steel shaft designed to accommodate a glass or passenger elevator within a limited space.

The elevator cabin is finished with **gold mirror stainless steel**, complemented by contemporary graphic patterns and natural marble flooring, creating a luxurious and distinctive atmosphere.

# RENOVATION (PANG NAK PROK) WAT KHAO SALA, SURIN



The engineering, construction, and expansion work for the building housing the large Buddha statue in the posture emphasizes the integration of modern steel structures with elegant religious artistry.



Full responsibility for piling and foundation works to ensure long-term structural integrity for the massive statue.

The project was executed under a strict **strategic timeline**, ensuring every phase—from structural assembly to final finishing—met the highest standards of craftsmanship. The result is a refined and dignified sanctuary dedicated to the Buddhist community.

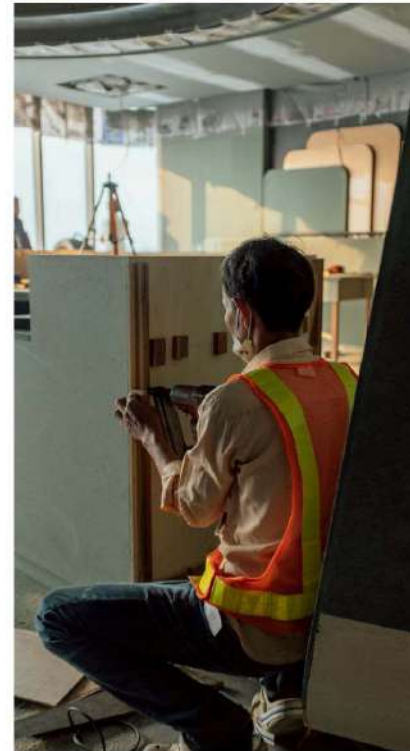
# OFFICE INTERIOR DESIGN EVERGREEN (THAILAND)

This project involved a comprehensive **Full Office Fit-out**, meticulously designed to transform the workspace into a modern, organized environment that meets international corporate standards.



The design centers on Spatial Efficiency, creating a seamless flow throughout the office. A minimalist palette of crisp white tones paired with natural wood finishes was selected to evoke a sense of openness and tranquility. To ensure a productive atmosphere, a customized lighting system was integrated to provide optimal illumination for professional tasks.

# LUXURY RESTAURANT INTERIOR FIT-OUT



This project showcases a sophisticated interior design and fit-out for a luxury restaurant, bar, and hotel recreational spaces. The design focuses on creating a distinctive, high-end atmosphere that redefines the guest experience through meticulous attention to detail.

We integrated advanced Ambient Lighting systems with custom-designed ceiling features to add depth and character. The interplay of light and shadow, combined with high-gloss surface finishes, creates a multi-dimensional and opulent environment.

# LUXURY RESIDENTIAL CONSTRUCTION SUKHUMVIT, BANGKOK



A comprehensive **Full-scale Residential Construction** of a premium private residence located in the prestigious Sukhumvit area. This project exemplifies our expertise in managing complex urban construction, delivering a seamless transition from structural foundation to high-end architectural finishing. Overseeing the entire lifecycle of the building process, ensuring structural integrity and adherence to the highest safety and quality standards.





## Thaiphath Enterprise Co., Ltd.

Rama II Rd., Soi 69 Yeak 2, Samaedam, Bangkhuntien,  
Bangkok

Tel : +66 2 892 9911

Email : [Thaiphath1997@yahoo.com](mailto:Thaiphath1997@yahoo.com)

<https://www.thaiphath-enterprise.com>



*"Your Trusted Partner in Construction Excellence."*